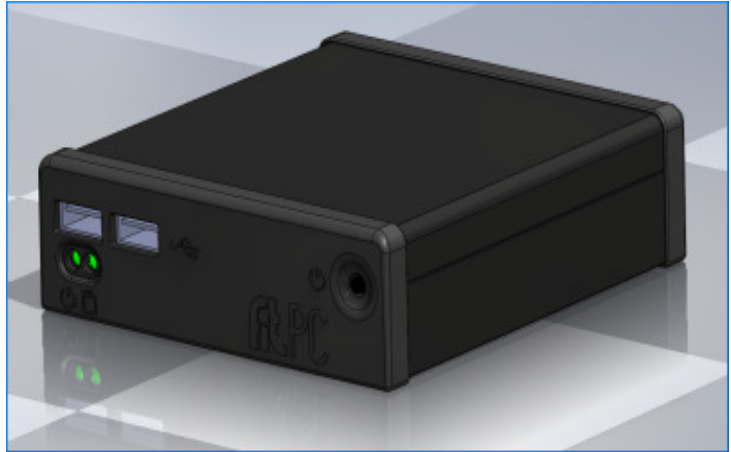


## ECU-004

**Compact alerts recording unit, used for remote control and management of on-site Emza's WiseEye video sensors.**

**Autonomous video analytic system, designed for perimeters and assets protection, intruder detection & visual notification. ECU-004 supports up to 4 WiseEye sensors.**



### SPECIFICATION

#### Hardware

<b>CPU:</b>	AMD Geode LX800 500MHz
<b>Chipset:</b>	AMD CS5536
<b>Display:</b>	Integrated Geode LX display controller up to 1920x1440
<b>Memory:</b>	512MB DDR 333MHz soldered on-board
<b>Hard disk:</b>	2.5" IDE 60GB

#### Software

<b>Linux:</b>	Ubuntu 8.10 : EMZA proprietary ECU application
---------------	---

#### Mechanical & environmental

Splash and dust resistant enclosure

<b>Material:</b>	Anodized aluminum body with PC/ABS panels
<b>Width:</b>	100mm
<b>Length:</b>	110mm
<b>Height:</b>	30mm
<b>Weight:</b>	380g
<b>Operating temperature:</b>	0 - 45°C
<b>Power:</b>	12V single supply
<b>Power consumption:</b>	4-6W
<b>Certifications</b>	CE, FCC Class B for Home or Office Use (see certificate)